

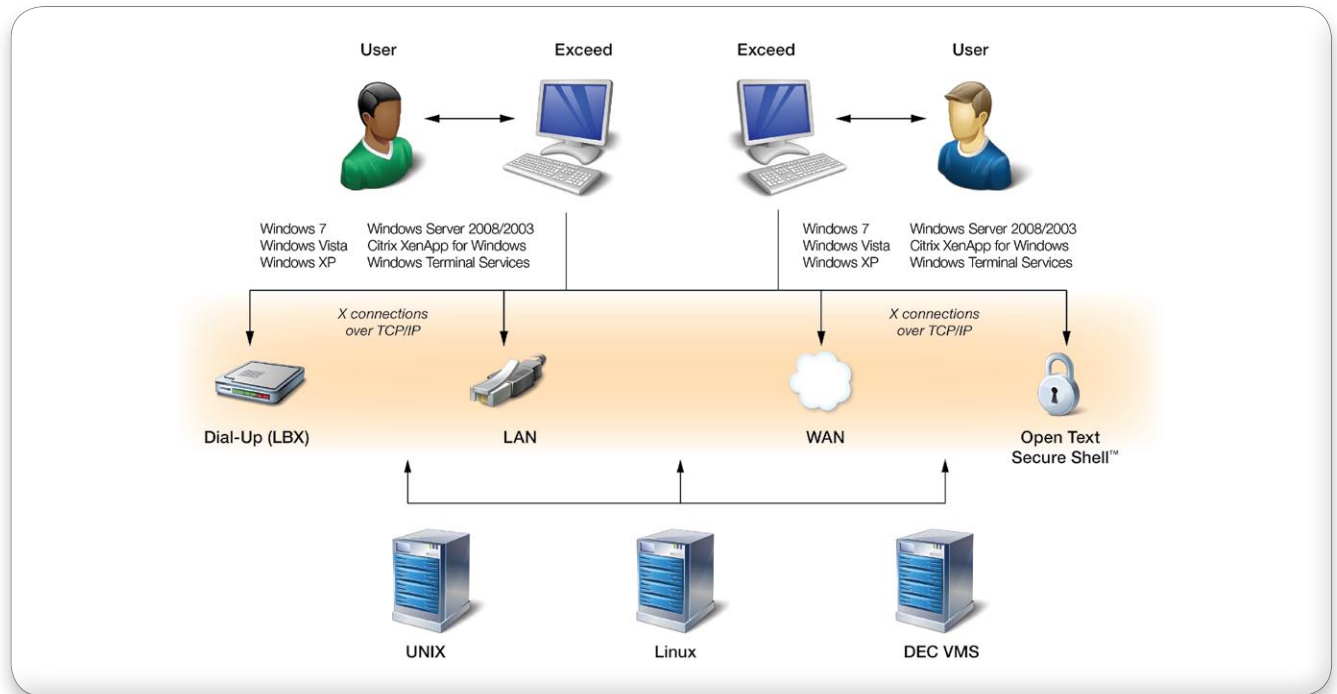
Open Text® Exceed® 14

Securely and efficiently connect with the most effective and popular PC X server

Open Text® Exceed® is the most secure and popular PC X server in the market. It allows users to cost-effectively connect powerful Microsoft® Windows® desktops to a wide variety of X Window-enabled servers and access high-end X applications.

Business benefit: unsurpassed versatility

Exceed is renowned for its performance, stability, and user-friendliness. Integrated with a powerful terminal emulation package—Open Text HostExplorer®, and the optional security suite—Open Text Secure Shell™, Exceed is the most versatile enterprise connectivity software available.



| | | | |
|---------------------------------------|--|--|--|
| Certification | <ul style="list-style-type: none"> • Compatible with Windows 7 | <ul style="list-style-type: none"> • Citrix Ready | <ul style="list-style-type: none"> • FIPS 140-2 Validated |
| X server | <ul style="list-style-type: none"> • Native 64-bit support for Microsoft Windows x64 family and Windows 7 • Support for X11R7.4 | <ul style="list-style-type: none"> • Publishes X applications using Xweb wizard • True color desktop sharing feature • Interactive support for password—aging events | <ul style="list-style-type: none"> • Local X support – X clients, window management, font RGB, xrdp, X-Trace • Extensive server visual and multiple color depths |
| Support | <ul style="list-style-type: none"> • Support advanced input devices including SpaceBall 5000™ and SpacePilot™ • Support for local and remote window managers | <ul style="list-style-type: none"> • Multiple monitors and screens support—up to 8 screens • Remember Session information for speedy restart • Advanced virtual desktop | <ul style="list-style-type: none"> • Support up to 254 X clients per session • Support roaming profiles • Double byte character set support |
| Security | <ul style="list-style-type: none"> • Secure Shell 2 support through the optional security package Open Text Secure Shell¹ 14 | <ul style="list-style-type: none"> • Support smart card solutions from ActivCard®, Axalto,™ and SafeNet® Inc. | <ul style="list-style-type: none"> • Support for SSL v2/3 & TLS and Kerberos v4/5 • Advanced host- and client-based security |
| Font support | <ul style="list-style-type: none"> • Support for Unicode and TrueType font encodings | <ul style="list-style-type: none"> • Support .enc font encoding • X11R5 RS/X11R6 font servers | <ul style="list-style-type: none"> • Automatic font substitution and font server reconnection |
| Deployment | <ul style="list-style-type: none"> • Support for multiple profile locations • Support for LDAP corporate directories | <ul style="list-style-type: none"> • Microsoft Windows Installer Technology (MSI)—support advertised installation and local installation cache | <ul style="list-style-type: none"> • Integrated tool to customize MSI packages (SMS compatible) |
| Startup & client launching | <ul style="list-style-type: none"> • XDMCP (query, Indirect, Broadcast), Passive | <ul style="list-style-type: none"> • REXEC, RLOGIN, RSH, TELNET, HRPS, PCXServer, Secure Shell¹ | |

Note 1 - Requires Open Text Secure Shell 14

System requirements

- **Hard drive space for typical installation:** 100 MB
- **Minimum CPU requirements:** Pentium 4
- **Operating systems:** Windows 7, Windows Vista SP1, Windows XP SP2, Windows Server® 2008, Windows Server® 2003, Windows Terminal Server edition, Citrix® XenApp™ for Windows platforms

<http://connectivity.opentext.com>

Sales connsales@opentext.com
+ 1 905 762 6400 | 1 877 359 4866

Support connsupport@opentext.com
+ 1 905 762 6400 | 1 800 486 0095

www.opentext.com